

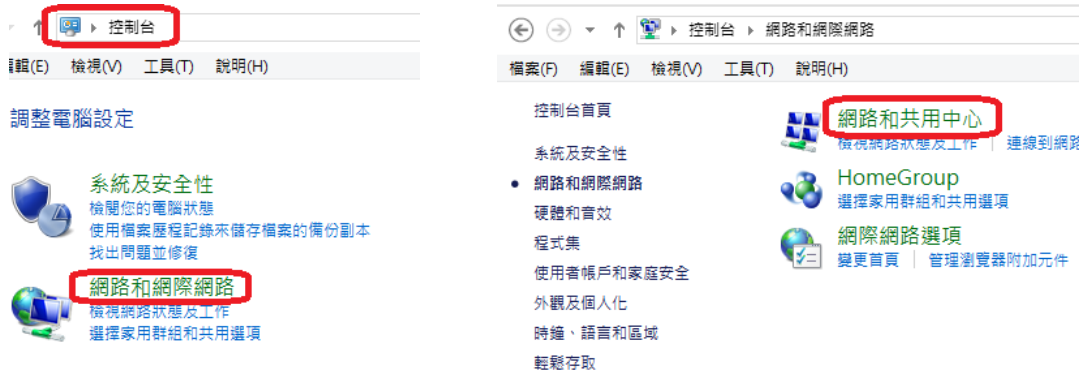
# 在電腦中查詢網路卡實體位址(MAC) (Windows)

## How to check the Network interface card physical address (MAC address) in your computer (windows)

<English in page 2>

1.開啟「控制台」，選擇「網路和網際網路」

2.選擇「網路和共用中心」

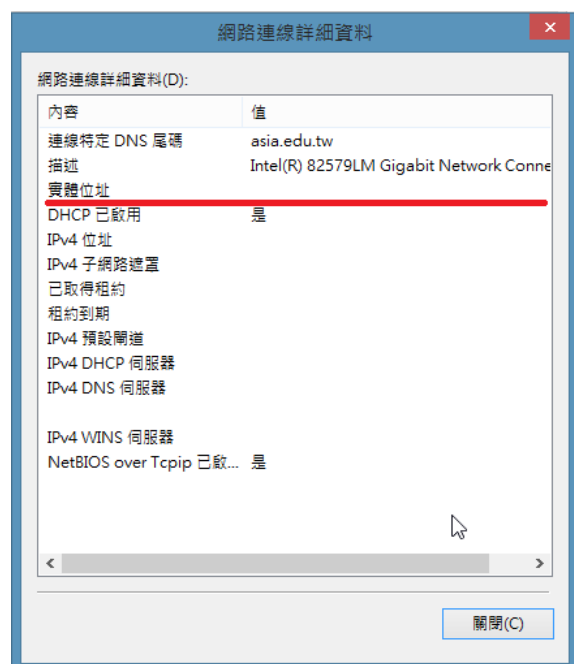
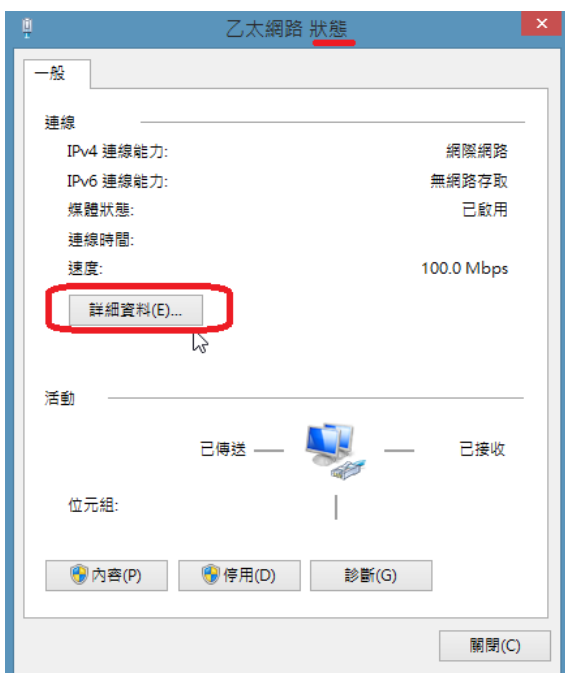


3.在「作用中的網路」區域，選擇連線的網路(本例名稱為乙太網路)



4.在「狀態」視窗選擇「詳細資料」

5.網路卡實體位址(MAC) 即在詳細資料區域內

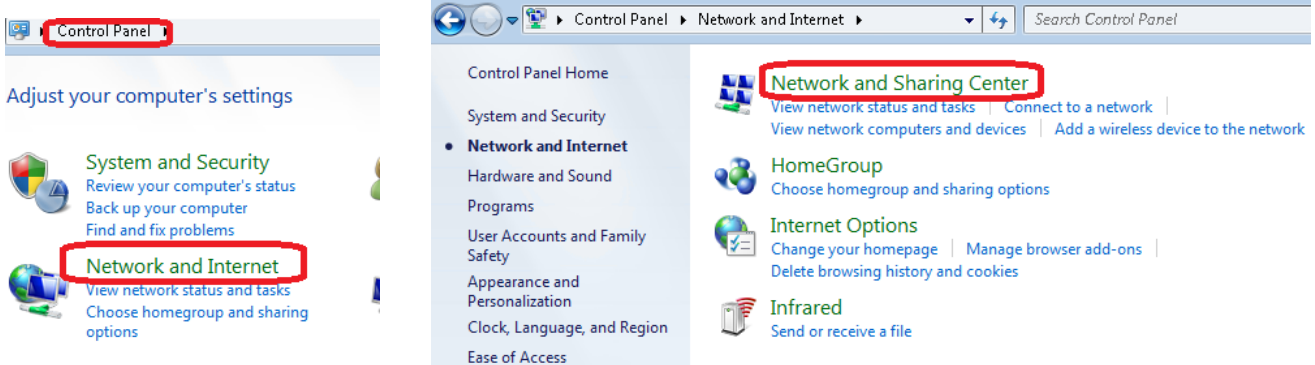


# 在電腦中查詢網路卡實體位址(MAC) (Windows)

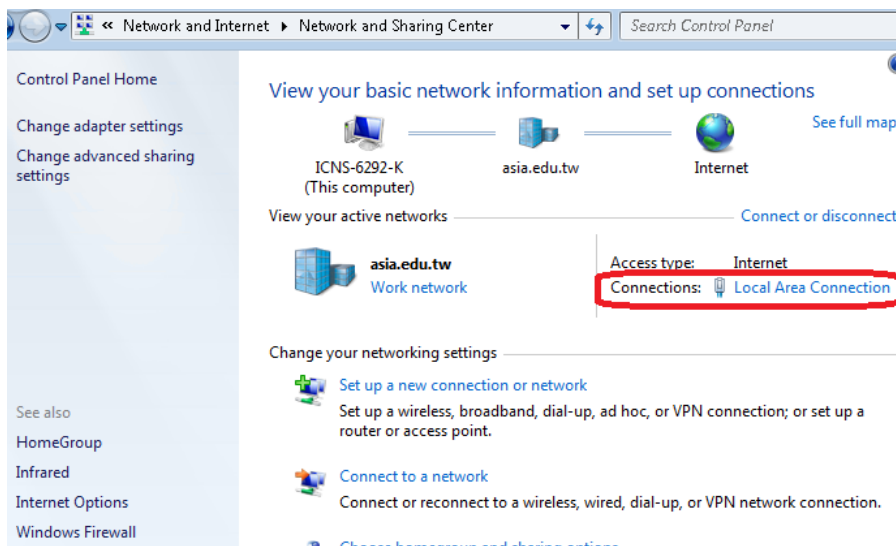
## How to check the Network interface card physical address (MAC address) in your computer (windows)

1. Open 「Control Panel」, Select 「Network and Internet」

2. Select 「Network and Sharing Center」



3. In 「active networks」, select 「Connections」 (here is Local Area Connection)



4. In 「Status」 window, press 「Details...」

5. Then you can get the Physical Address (MAC)

